

A clinical portal to assist healthcare workers.



Providing Code Compliant Penetrations with **EZ Path®**

Moving monitoring equipment and IV bags outside of patient rooms conserves personal protective equipment and reduces exposure of clinical staff to infected patients. Running temporary services like IV lines, extension cords, and monitoring lines, under the door is not ideal. It can cause a trip hazard or clinical equipment could be disconnected.

Hospitals are discovering that using **EZ Path®** to run those temporary services is a better solution.

See back of page to read technical data ►

Scan here to see video ►



EZ Path® Always Compliant.



EZ Path® Fire-Rated Pathways

EZ Path® Smoke & Acoustical Pathways

For more information please call or click email address to contact one of our healthcare experts:

Kelly Mason
Director of Healthcare Partnerships
810.650.3419
kmason@stifirestop.com

Mark Izsza
Regional Manager, Healthcare - Northeast
973.271.8894
mizsa@stifirestop.com

Gene Markievich
Regional Manager, Healthcare - South Atlantic
727.424.8276
gmarkievich@stifirestop.com

Malcolm Sparling
Regional Manager Healthcare - Midwest
913.735.6801
msparling@stifirestop.com

Michael Bartkowski
Healthcare Specialist - Midwest
708.280.1161
mbartkowski@stifirestop.com

Tim Proodian
Regional Manager, Healthcare - South Central
832.436.8687
tproodian@stifirestop.com

Brandon Kaplan
Southwest Region Manager
720.587.9911
bkaplan@stifirestop.com

Justin Evatt
Northwest Regional Manager
702.423.9799
jevatt@stifirestop.com

Eric De Amorim
National Sales Manager, Canada
514-777-7779
edeamorim@stifirestop.com

Sealing Temporary Penetrations with EZ-Path®



Figure 1 - EZ-Path Series 33 in Fire-Rated Wall

where frequently modified temporary electrical lines and extension cords must traverse fire or smoke rated assemblies, making EZ-Path a great choice. Figure 1 shows the EZ-Path Series 33 Fire-Rated Pathway used in a fire-rated application. Figure 2 shows the EZ-Path 44NEZ Smoke & Acoustical Pathway used in a non-fire-rated smoke partition.



Figure 2 - EZ-Path Series 44NEZ in Non-Fire-Rated Wall

The COVID-19 pandemic has forced healthcare facilities to become even more resourceful. Facilities are relocating equipment traditionally contained within the patient room such as IVs, Infusion Pumps, and patient monitoring equipment, into the corridor in an attempt to conserve personal protective equipment (PPE) and reduce the frequency of contact between nurses and infected patients. We have been asked by many facilities whether EZ-Path devices could be installed as a permanent pathway for various temporary service runs such as extension cords or infusion pump tubing as they pass from the patient's room into the corridor.

EZ-Path devices have always been a great choice for sealing temporary penetrations. Stadiums and casinos have used EZ-Path devices to seal beverage lines for soda, beer, and spirits in remote beverage dispensing systems where the lines must be changed frequently. There are also a myriad of deployments

During the COVID-19 crisis, we have seen healthcare facilities adopting the use of both the original EZ-Path Fire Rated Pathway and the EZ-Path Smoke and Acoustical Pathway for sealing these temporary service penetrations into the corridor from patient rooms. The devices allow for services to be routed through a corridor wall, while always maintaining a rated seal. The self-sealing design automatically adjusts to accommodate for the addition or removal of services without requiring manual intervention or activation, eliminating the potential hazard of unsealed openings existing between the corridor and patient room whether for smoke, flames, particulate dust/air, or noise (i.e. STC Ratings).

For walls that are fire-rated, the EZ-Path Series 22, 33, or 44+ are an excellent choice for providing a pass through for these temporary services while still maintain consistent performance (Figure 3).

For non-fire-rated walls, the Series 33NEZ or 44NEZ offer the same great ability to provide a seal 100% of the time while also allowing for the routing of temporary services with the added advantage of being installed flush with wall surfaces (Figure 4).

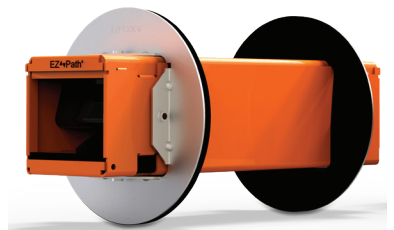


Figure 3 - EZ-Path® Series 33 Fire-Rated Pathway for Fire-Rated Walls

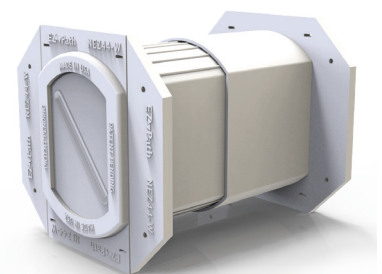


Figure 4 - EZ-Path® Series 44NEZ Smoke & Acoustical Pathway for Non-Fire-Rated Walls